

# NEW PRODUCT



COLORÉD BODY PORCELAIN STONEWARE



MATERIA

## COLORS



WHITE



SAND



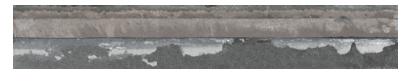
SMOKE



DENIM



RUST



BLACK

## DESCRIPTION

*Materia*, by *Cerdomus* is a colored body porcelain stoneware collection that explores the contrast between the minimalism of a single format and the chromatic versatility of textured surfaces. A style that draws on disparate aesthetic sensibilities and offers a world of design possibilities. With 6 colour combinations ranging from tone-on-tone nuances to vivid juxtaposition. *Materia* is a collection with a contemporary feel, an international outlook and a warm, inviting character.

## FORMATS (Rectified tiles)

RT: 20x120 cm

## APPLICATIONS

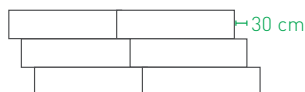
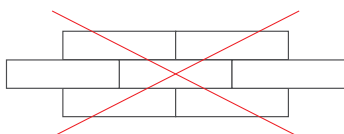
*Materia* is ideal for an interior application, on floors and walls, in your residential and commercial projects.

## TECHNICAL INFORMATION

	WATER ABSORPTION	FROST RESISTANCE	ABRASION RESISTANCE	CHEMICAL RESISTANCE	STAIN RESISTANCE	SLIP RESISTANCE	RECYCLED CONTENT
NORMS	ISO 10545/3	ISO 10545/12	ISO 10545/6 ≤ 175 mm <sup>3</sup>	ISO 10545/13	ISO 10545/14	DIN51130- DIN51097	D.C.O.F. ANSI 137.1-2012 (≥ 0,42)
VALUES	≤ 0,5%	RESISTANT	≤ 175 mm <sup>2</sup>	UA ULC UHC	CLASS 4	R9 A+B	> 0,57
							LEED MR CREDIT 4
							PRE.: ≥ 40% <sup>(1)</sup>

## INSTALLATION AND MAINTENANCE

It is suggested to lay tiles with a joint of 3 mm. ■ Use high quality adhesive and grout from a manufacturer such as Mapei, following manufacturer's recommendations and depending on site conditions. ■ It is recommended that you lay the tiles side by side or offset by a maximum of 30 cm. Fixing in a 50% staggered configuration is not advised. ■ As soon as the joints have fully set, it is advisable to proceed to the initial post-construction cleaning as described by the manufacturer. ■ Daily maintenance can be performed with a neutral detergent.



ciot

ciot.com

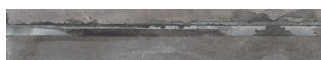


METRIC	20x120 cm
NOMINAL	8x47 1/4"
	RT
WHITE	●
SAND	○
SMOKE	○
DENIM	○
RUST	○
BLACK	●

### VARIATION



BLACK



SAND



WHITE



### AVAILABILITY <sup>1</sup>

- in stock
- special order
- N/A not available

<sup>1</sup> Subject to change

Decors and special pieces available. Consult your sales representative.

**THICKNESS: 10 mm**

MADE IN ITALY

### ICONS LEGEND

#### APPLICATION



Interior



Exterior



Wall



Floor

#### USE



Residential



Commercial



Industrial

#### FROST



Frost resistant

#### SLIP RESISTANCE



Low



R10



R11



R12

High

#### SHADE VARIATION



Low



V2



V3



V4

High

#### ENVIRONMENT



LEED™ norm



Ecolabel norm

In the event of discrepancy with the official information of the manufacturer, the latter shall prevail.

<sup>(1)</sup>**Recycled Content:** The PRE and POST values indicate the origin of the materials used in the production of this product (Pre-consumer and Post-consumer). Please consult the manufacturer's Recycled Content document to learn more about this and other LEED® compliant products.