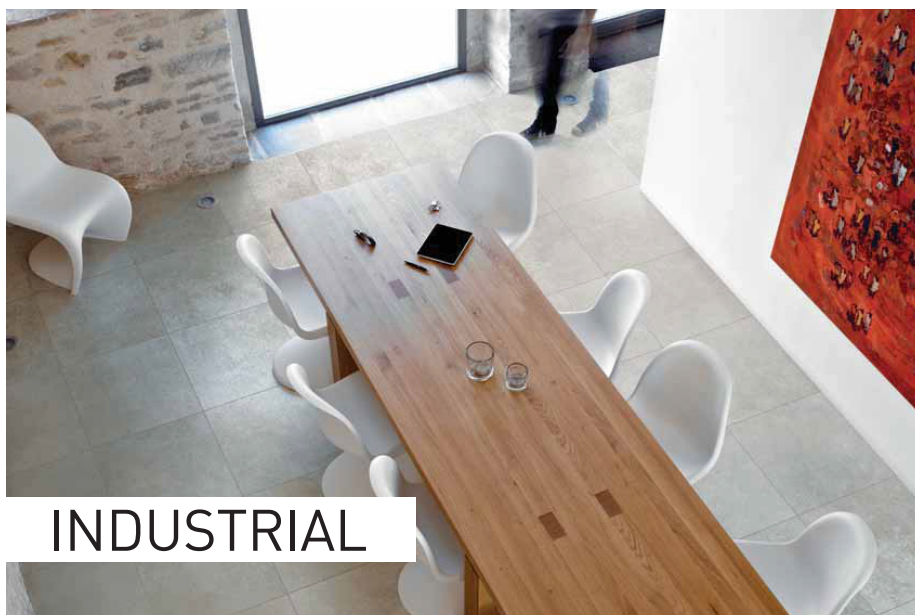


NEW PRODUCT

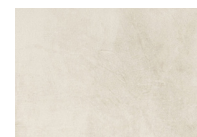


FULL BODY PORCELAIN STONEWARE

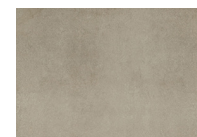


INDUSTRIAL

COLORS



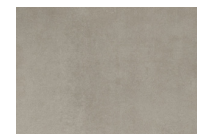
IVORY



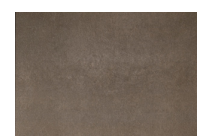
SAGE



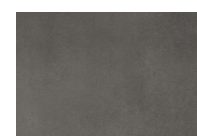
TAUPE



STEEL



MOKA



PLOMB

DESCRIPTION

Industrial by *Floorgres* is a full body porcelain stoneware available in a variety of modular sizes. With three cool colors, three warm colors and three finishes, *Industrial* creates classic combinations while adding a touch of originality thanks to tile cutouts of geometric shapes.

FORMATS (Modular, rectified monocaliber tiles)

NATURAL RT: 60x120 cm | 80x80 cm | 40x80 cm | 20x80 cm | 60x60 cm | 30x60 cm

SOFT RT: 60x120 cm | 80x80 cm | 40x80 cm | 20x80 cm | 60x60 cm | 30x60 cm

BOCCIARDATO RT: 60x60 cm | 30x60 cm

APPLICATIONS

Industrial is ideal for an application on walls or floors in your residential and commercial (heavy traffic) projects. The Bocciardato 60x60 cm tile, with a thickness of 20 mm, is ideal for an application on an outdoor terrace.

TECHNICAL INFORMATION

	WATER ABSORPTION	FROST RESISTANCE	ABRASION RESISTANCE	CHEMICAL RESISTANCE	STAIN RESISTANCE	SLIP RESISTANCE
NORMS	ISO 10545/3	ISO 10545/12	ISO 1054/6	ISO 10545/13	ISO 10545/14	DIN51130- DIN51097
VALUES	≤ 0,1 %	RESISTANT	< 150 mm ³	UA ULA UHA	Class 4	SOFT: R9 NAT.: R10 - B BOC.: R11 - C

INSTALLATION AND MAINTENANCE

To simplify laying operations and ensure the product looks its best, it is suggested to lay with joints of 2 to 3 mm. As soon as the joints have fully set, it is advisable to proceed to the initial post-construction cleaning as described by the manufacturer.



ciot.com

NEW PRODUCT



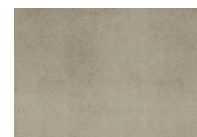
FULL BODY PORCELAIN STONEWARE



COLORS



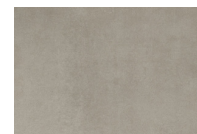
IVORY



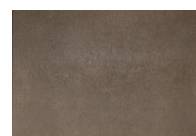
SAGE



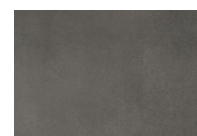
TAUPE



STEEL



MOKA



PLOMB



INDUSTRIAL MAGNUM

DESCRIPTION

The impressive size *Magnum* 120 x 300 cm makes *Industrial* the ideal collection for your major projects. These huge tiles will give a majestic look to any room. For a dramatic effect, pair them with the *Puzzle* pattern created with tiles cut with a hydrojet technology.

FORMATS (Modular, rectified monocaliber tiles)

NATURAL RT: 120x300 cm

Thickness of 6 mm

APPLICATIONS

The *Magnum* format of *Industrial* is ideal for application on walls or floors in your residential and commercial (light traffic) projects.

TECHNICAL INFORMATION

	WATER ABSORPTION	FROST RESISTANCE	ABRASION RESISTANCE	CHEMICAL RESISTANCE	STAIN RESISTANCE	SLIP RESISTANCE
NORMS	ISO 10545/3	ISO 10545/12	ISO 1054/6	ISO 10545/13	ISO 10545/14	DIN51130- DIN51097
VALUES	≤ 0,06 %	RESISTANT	< 142 mm ³	UHA	Class 5	NAT.: R9

INSTALLATION AND MAINTENANCE

To simplify laying operations and ensure the product looks its best, it is suggested to lay with joints of 2 to 3 mm. As soon as the joints have fully set, it is advisable to proceed to the initial post-construction cleaning as described by the manufacturer.

The *Puzzle* pattern can be mounted on walls with a joint of 1 mm.

ciot

ciot.com

INDUSTRIAL

FULL BODY PORCELAIN STONEWARE



MAGNUM



METRIC	120x300 cm	30x60 cm			60x60 cm			20x80 cm		40x80 cm		80x80 cm		60x120 cm		15x60 cm	
NOMINAL	48x120"	12x24"			24x24"			8x32"		16x32"		32x32"		24x48"		6x24"	
	NAT. RT**	NAT. RT	SOFT RT	BOC. RT	NAT. RT	SOFT RT	BOC. RT	NAT. RT	SOFT RT	NAT. RT	SOFT RT	NAT. RT	SOFT RT	NAT. RT	SOFT RT	SOFT RT	
IVORY	○	●	○	○	○	●	○	○	○	○	○	○	○	○	○	○	WARM MIX ●
TAUPE	○	○	○	○	○	○	○	○	○	○	○	○	○	○	○	○	
MOKA	○	○	○	○	○	○	○	○	○	○	○	○	○	○	○	○	
SAGE	○	○	○	○	○	○	○	○	○	○	○	○	○	○	○	○	COLD MIX ●
STEEL	○	●	○	●	○	○	○	○	○	○	○	○	○	○	○	○	
PLOMB	○	●	○	●	○	○	○	○	○	○	○	○	○	○	○	○	

AVAILABILITY *

- stock
- special order
- N/A non available

* Subject to change

** Given the large format of the Magnum tile, the miniature is not proportional to the others.

Decors and special pieces available, consult your Ciot representative.

THICKNESS: 10 mm

60x60 cm BOC. RT: 20 mm | Magnum: 6 mm

ICONS LEGEND

APPLICATION



Interior



Exterior



Wall



Floor

USE



Residential



Commercial



Industrial

FROST



Frost resistant

SLIP RESISTANCE RATE



Low



Low



Low



High

SHADE VARIATION



Low



Low



Low



High

ENVIRONMENT



LEED norm



Ecolabel norm

In the event of discrepancy with the official information of the manufacturer, the latter shall prevail.



ciot.com