

NEW PRODUCT



GLAZED PORCELAIN STONEWARE

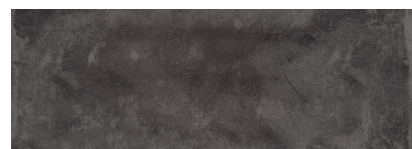


DIESEL STAGE

COLORS



METALLIC BLUE



METALLIC GREY



METALLIC RED

DESCRIPTION

Diesel Stage by *Iris Ceramica* is a collection of glazed porcelain stoneware available in three colors. Inspired by the industrial world, this collection shows two unique finishes, Diving and Boss. Absolutely modern, Diesel Stage tiles will bring a metropolitan character to your decor.

FORMATS (Rectified tiles)

DIVING RT: 30x60 cm | 60x60 cm | 60x120 cm

BOSS RT: 30x60 cm | 60x60 cm | 60x120 cm | 120x120 cm

APPLICATIONS

Diesel Stage is ideal for an interior application on walls and floors in your residential and commercial projects (light traffic).

TECHNICAL INFORMATION

| | WATER ABSORPTION | FROST RESISTANCE | BENDING STRENGTH | PEI ABRASION RESISTANCE | STAIN RESISTANCE | SLIP RESISTANCE |
|--------|------------------------|------------------|---------------------------------|-------------------------|------------------|--|
| NORMS | ISO 10545/3 ≤ 0,5 % | ISO 10545/12 | ISO 10545/4 | ISO 10545/7 | ISO 10545/14 | D.C.O.F. ANSI 137.1-2012 (>0,42) |
| VALUES | 0,04% | RESISTANT | 55N/mm ² > 1700 N | PEI 3 | CLASS 5 | DIVING: 0,43 BOSS: NOT CONFORM |

INSTALLATION AND MAINTENANCE

It is suggested to lay tiles with a joint of 3-4 mm. ■ Use high quality adhesive and grout from a manufacturer such as Mapei, following manufacturer's recommendations and depending on site conditions. ■ As soon as the joints have fully set, it is advisable to proceed to the initial post-construction cleaning as described by the manufacturer. ■ Clean with a neutral detergent when needed.

ciot

ciot.com

NEW PRODUCT



DOUBLE FIRED TILE



DIESEL STAGE WALL

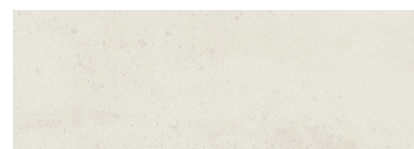
COLORS



DRIP BLUE



DRIP RED



DRIP WHITE

DESCRIPTION

Diesel Stage Wall by *Iris Ceramica* is a double fired tile collection available in three shades of white. The worn out and stained look of these tiles bring a truly authentic look. These tiles, which perfectly coordinate with the floor tiles of the same collection, will attract attention and give style to your decor.




FORMATS

LUCIDO (LUC.): 10x30 cm

APPLICATIONS

Diesel Stage Wall is ideal for an interior application on walls in your residential and commercial projects.

TECHNICAL INFORMATION

| |  WATER ABSORPTION |  FROST RESISTANCE |  BENDING STRENGTH |  STAIN RESISTANCE |
|--------|--|--|--|--|
| NORMS | ISO 10545/3 ≤ 0,5 % | ISO 10545/12 | ISO 10545/4 | ISO 10545/14 |
| VALUES | 16% | NOT RESISTANT | 22N/mm ² | CLASS 5 |

INSTALLATION AND MAINTENANCE

It is suggested to lay tiles with a joint of 3-4 mm. ■ Use high quality adhesive and unsanded grout (Keracolor U) from a manufacturer such as Mapei, following manufacturer's recommendations and depending on site conditions. ■ As soon as the joints have fully set, it is advisable to proceed to the initial post-construction cleaning as described by the manufacturer. ■ Clean with a neutral detergent when needed.

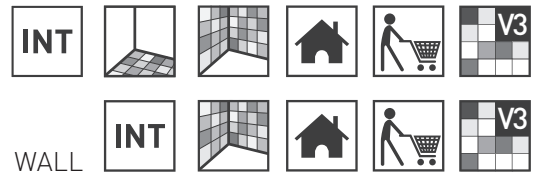
ciot

ciot.com

DIESEL STAGE

GLAZED PORCELAIN STONEWARE

DOUBLE FIRED TILE



| | DIVING | | | BOSS | | | |
|--------------------|----------|----------|-----------|----------|----------|-----------|------------|
| | | | | | | | |
| METRIC (NOMINAL) | 30x60 cm | 60x60 cm | 60x120 cm | 30x60 cm | 60x60 cm | 60x120 cm | 120x120 cm |
| IMPERIAL (NOMINAL) | 12x24" | 24x24" | 24x48" | 12x24" | 24x24" | 24x48" | 48x48" |
| | RT | RT | RT | RT | RT | RT | RT |
| METALLIC BLUE | ● | ○ | ● | ● | ○ | ○ | ○ |
| METALLIC GREY | ● | ○ | ● | ● | ○ | ● | ○ |
| METALLIC RED | ● | ○ | ● | ● | ○ | ○ | ○ |

| WALL | |
|--------------------|----------|
| | |
| METRIC (NOMINAL) | 10x30 cm |
| IMPERIAL (NOMINAL) | 4x12" |
| | LUC. |
| DRIP BLUE | ● |
| DRIP RED | ● |
| DRIP WHITE | ● |

AVAILABILITY ¹

- stock
- special order
- N/A not available

¹ Subject to change

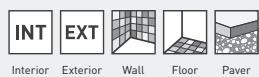
Mosaics and special pieces available, ask your Ciot representative.

THICKNESS : 9 mm
DIESEL STAGE WALL : 7 mm

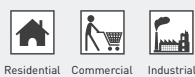
MADE IN ITALY.

ICONS LEGEND

APPLICATION



USE



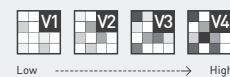
FROST



SLIP RESISTANCE



SHADE VARIATION



ENVIRONMENT



In the event of discrepancy with the official information of the manufacturer, the latter shall prevail.