

NEW PRODUCT

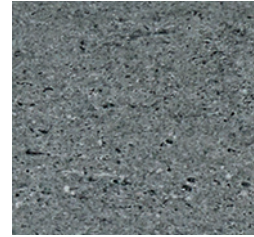


GLAZED PORCELAIN STONEWARE

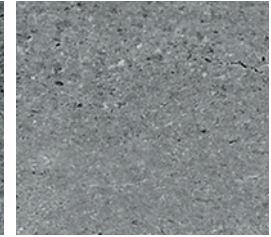


DAMA

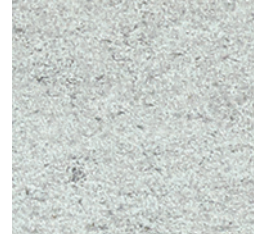
COLORS



GRAPHITE



GREY



PEARL



SAND

DESCRIPTION

Dama, by *STN Ceramica* is a glazed porcelain stoneware. Inspired by basaltina, of volcanic origin, *Dama* has a matte surface dotted with tiny veins. A geometric motif decoration completes the offering of this modern and sober collection, ideal for combining with other materials and dressing contemporary spaces.

APPLICATIONS

Dama is ideal for an interior application on walls and floors, in residential and commercial projects (light traffic).

TECHNICAL INFORMATION

	WATER ABSORPTION	FROST RESISTANCE	ABRASION RESISTANCE	BENDING STRENGTH	CHEMICAL RESISTANCE	STAIN RESISTANCE	MOHS HARDNESS	SLIP RESISTANCE	
NORMS	ISO 10545/3	ISO 10545/12	ISO 10545/7 PEI	ISO 10545/4 35 mm ² min.	ISO 10545/13	ISO 10545/14 min. CLASS 3	EN 101	DIN51130- DIN51097	D.C.O.F. ANSI 137.1-2012 (>0,42)
VALUES	≤ 0.5 %	CONFORM	GRAPHITE: PEI 3 OTHER COLORS: PEI 4	≥1300 N ≥ 35 N/mm ²	GB GLB	MIN. 3	3	R9 A	-

INSTALLATION AND MAINTENANCE

It is suggested to lay tiles with a joint of 2-3 mm. ■ Use high quality adhesive and grout from a manufacturer such as Mapei, following manufacturer's recommendations and depending on site conditions. ■ As soon as the joints have fully set, it is advisable to proceed to the initial post-construction cleaning as described by the manufacturer. ■ Clean with a neutral detergent when needed. ■ When installing, mix the content of several boxes to ensure even distribution of the tile shading.



GLAZED PORCELAIN STONEWARE

				DECOR		
METRIC / MÉTRIQUE (NOM.)	30x60 cm	60x60 cm	60x120 cm	60x120 cm	100x100 cm	75x150 cm
IMPERIAL / IMPÉRIAL (NOM.)	12x24"	24x24"	24x47"	24x47"	40x40"	30x60"
THICKNESS / ÉPAISSEUR	9.5 mm	9.5 mm	10 mm	10 mm	10 mm	10 mm
	MATT RT	MATT RT	MATT RT	MATT RT	MATT RT	MATT RT
	GRAPHITE	○	●	●	●	○
	GREY	○	●	●	●	○
	PEARL	○	●	●	●	○
	SAND	○	●	●	●	○

RT : Rectified / Rectifié

AVAILABILITY ¹

- stock
- special order
- N/A not available

¹ Subject to change

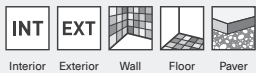
For more information, consult your Ciot representative.

THICKNESS: 9.5 - 10 mm

MADE IN SPAIN.

ICONS LEGEND

APPLICATION



USE



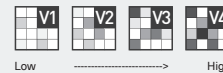
FROST



SLIP RESISTANCE



SHADE VARIATION



ENVIRONMENT



In the event of discrepancy with the official information of the manufacturer, the latter shall prevail.